

P600 SERIES (Straight Dip Type)

SPECIFICATION

Insulator Material : PBT+30%GF UL94V-0
 Contact Material : Phosphor Bronze
 Plating : Selective Gold Plating Over Nickel On Contact Point
 100µ" Tin Plating On Tail Section
 50µ" Nickel Underplating
 Current Rating : 3 Ampere
 Insulation Resistance : 5000 megohms minimum
 Dielectric Withstanding Voltage : 1000 VAC RMS
 Operation Temperature Range : -55°C to +105°C
 Insertion Force (Max.) : 32 LBS
 Withdrawal Force (Min.) : 7 LBS

ORDERING INFORMATION

P600 - □□ - □ - 2

Terminal Style

00 : Straight Dip Type

No. of Contacts

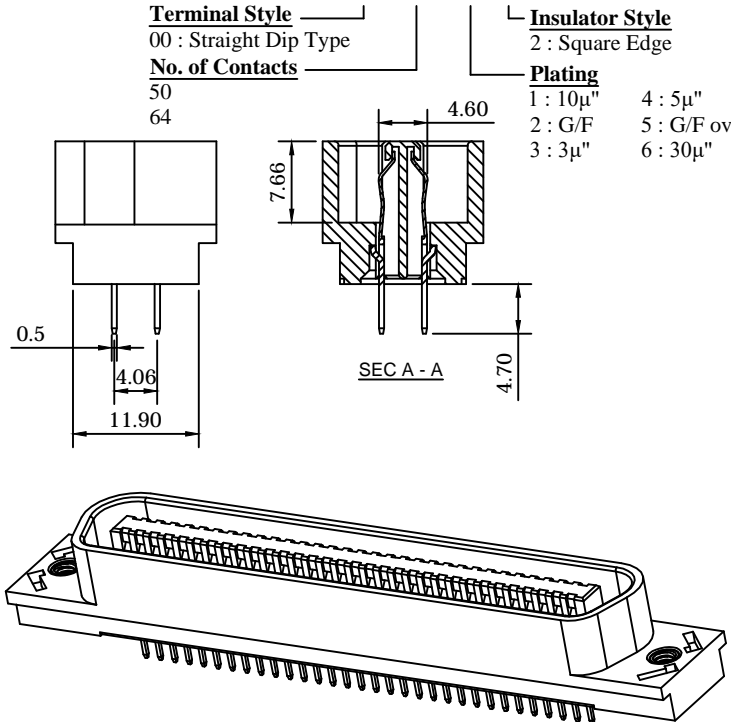
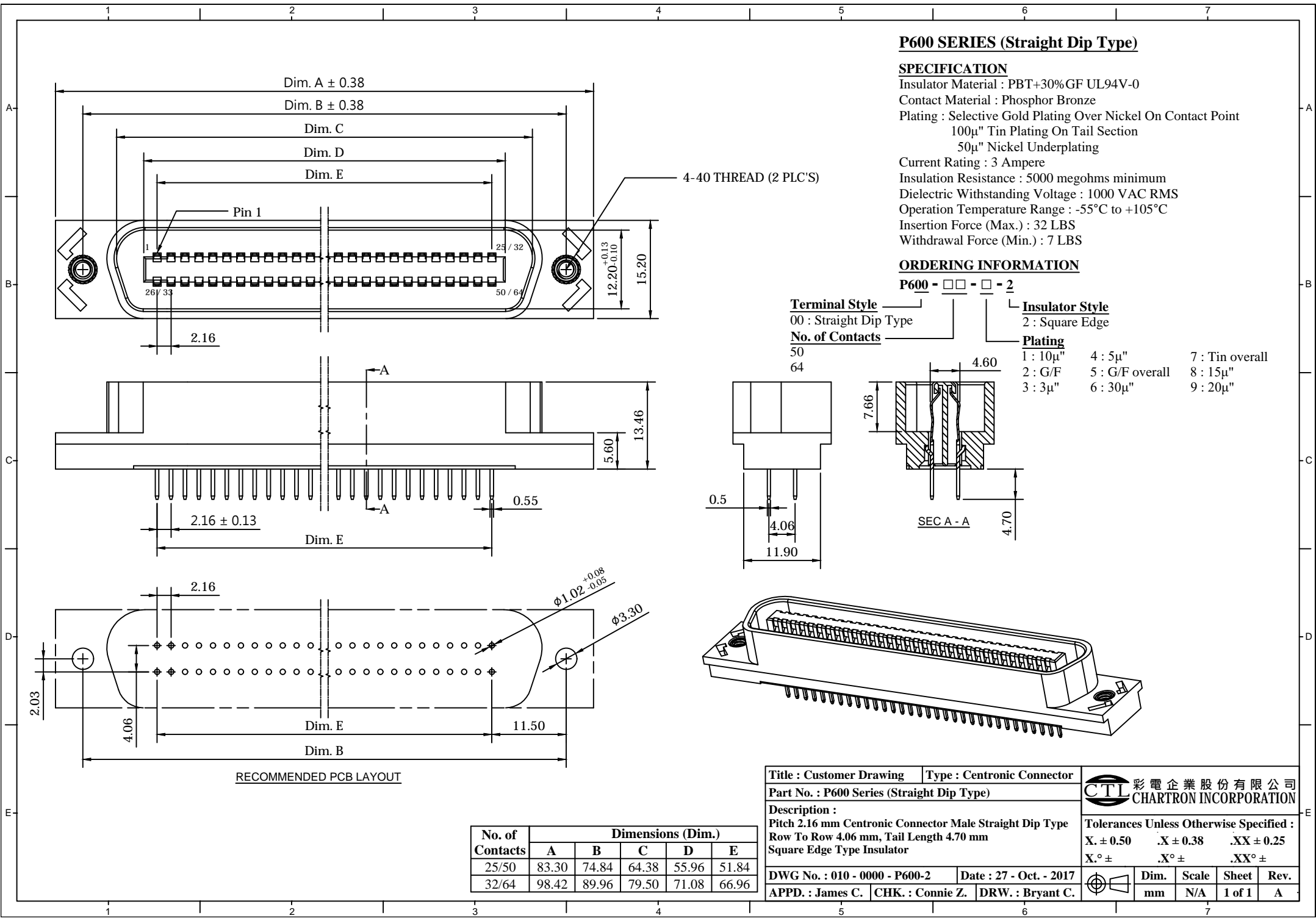
50
64

Insulator Style

2 : Square Edge



Plating

1 : 10µ"	4 : 5µ"	7 : Tin overall
2 : G/F	5 : G/F overall	8 : 15µ"
3 : 3µ"	6 : 30µ"	9 : 20µ"



RECOMMENDED PCB LAYOUT

No. of Contacts	Dimensions (Dim.)				
	A	B	C	D	E
25/50	83.30	74.84	64.38	55.96	51.84
32/64	98.42	89.96	79.50	71.08	66.96

Title : Customer Drawing	Type : Centronic Connector	 彩電企業股份有限公司 CHARTRON INCORPORATION								
Part No. : P600 Series (Straight Dip Type)										
Description :										
Pitch 2.16 mm Centronic Connector Male Straight Dip Type										
Row To Row 4.06 mm, Tail Length 4.70 mm										
Square Edge Type Insulator										
Tolerances Unless Otherwise Specified :										
X. ± 0.50	.X ± 0.38	.XX ± 0.25								
X. ° ±	.X ° ±	.XX ° ±								
DWG No. : 010 - 0000 - P600-2	Date : 27 - Oct. - 2017	 <table border="1"> <tr> <th>Dim.</th> <th>Scale</th> <th>Sheet</th> <th>Rev.</th> </tr> <tr> <td>mm</td> <td>N/A</td> <td>1 of 1</td> <td>A</td> </tr> </table>	Dim.	Scale	Sheet	Rev.	mm	N/A	1 of 1	A
Dim.	Scale		Sheet	Rev.						
mm	N/A	1 of 1	A							
APPD. : James C.	CHK. : Connie Z.	DRW. : Bryant C.								